

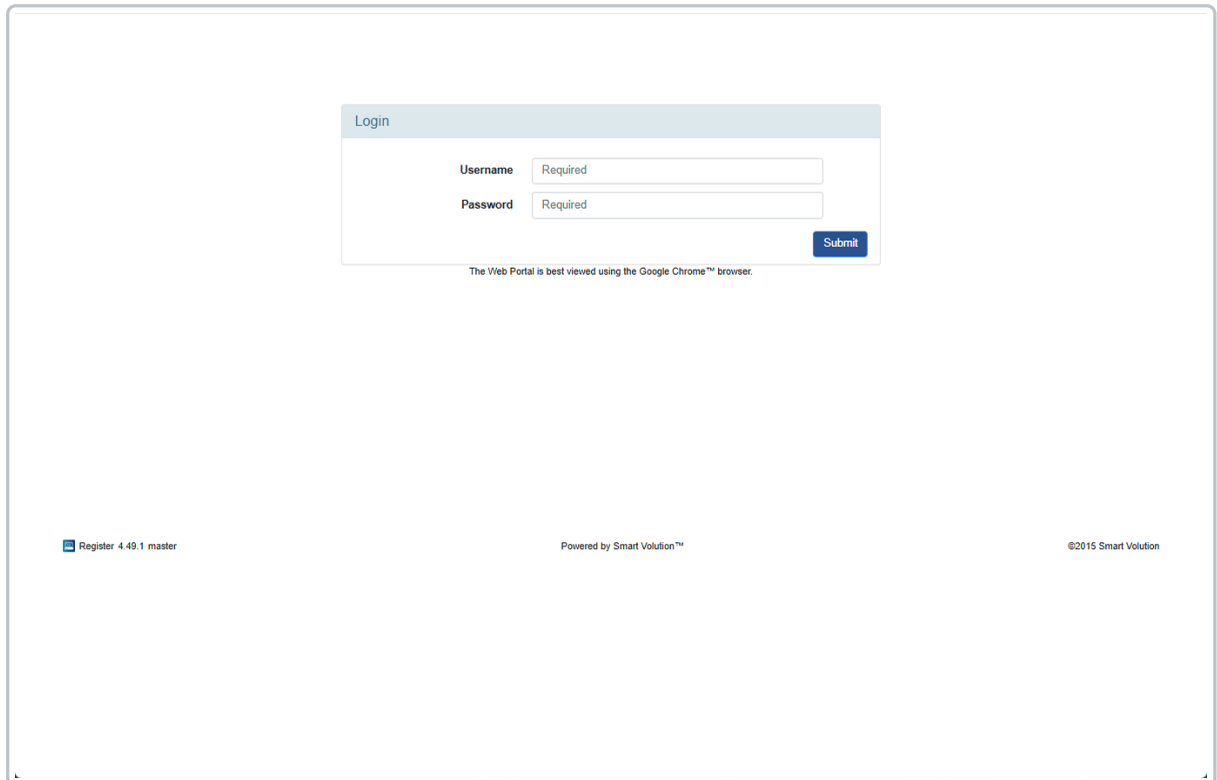
? How to configure your Gratuity (Tipping) options

Last Modified on 07/07/2025 1:47 pm BST

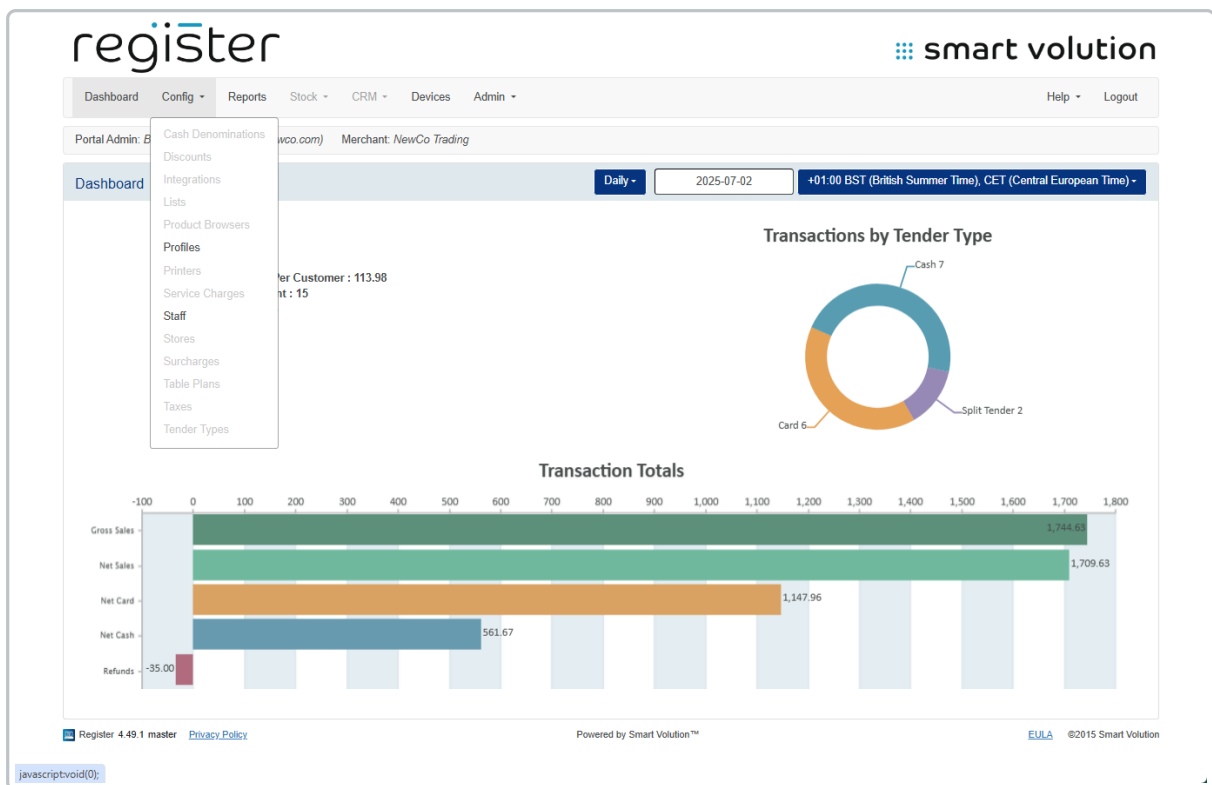
Your system comes pre-configured with both **custom tip amounts** and **pre-set tip buttons** enabled. You can tailor these settings to match your business preferences.

? To Configure Tip Options in the Web Portal:

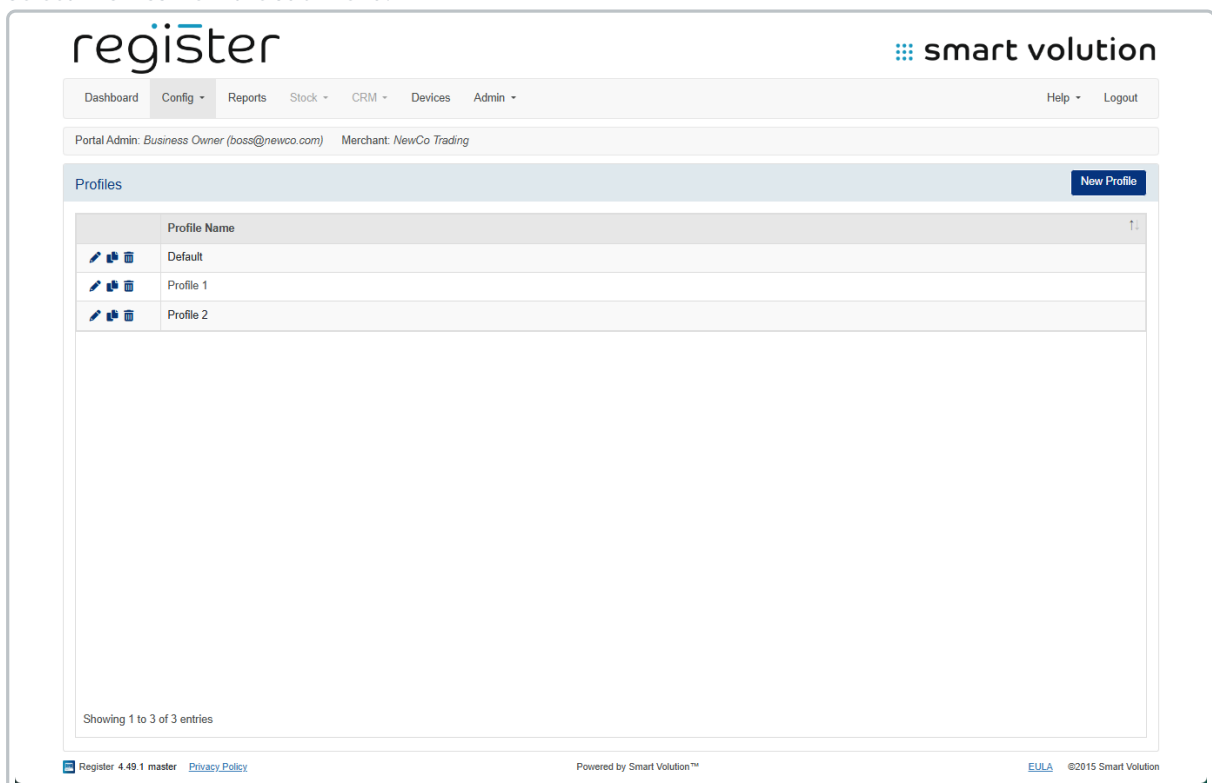
1. **Log in** to the **Web Portal** using the credentials provided by your **Solution Provider**.

A screenshot of a web portal login page. At the top, there is a light blue header with the word "Login". Below this, there are two input fields: "Username" and "Password", both with "Required" text inside. To the right of the "Password" field is a blue "Submit" button. Below the input fields, a small note states "The Web Portal is best viewed using the Google Chrome™ browser." At the bottom of the page, there are three footer items: "Register 4.49.1 master" on the left, "Powered by Smart Volution™" in the center, and "©2015 Smart Volution" on the right.

2. Click **Config** in the top navigation bar.

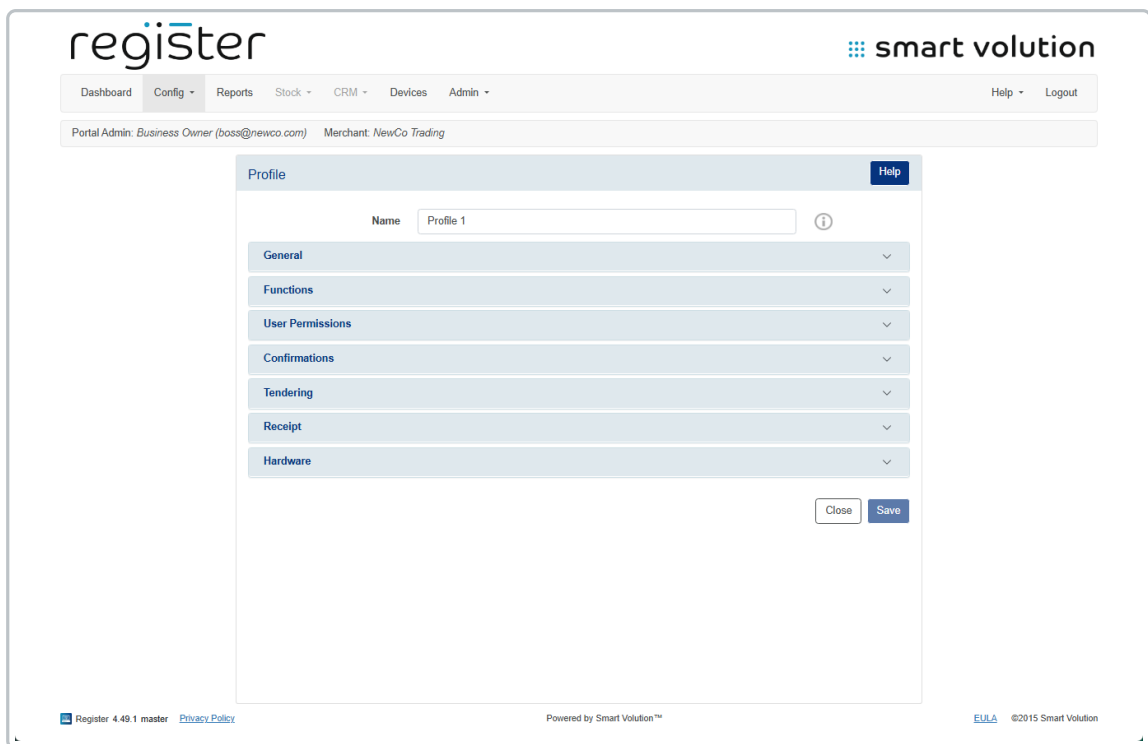


3. Select **Profiles** from the sub-menu.

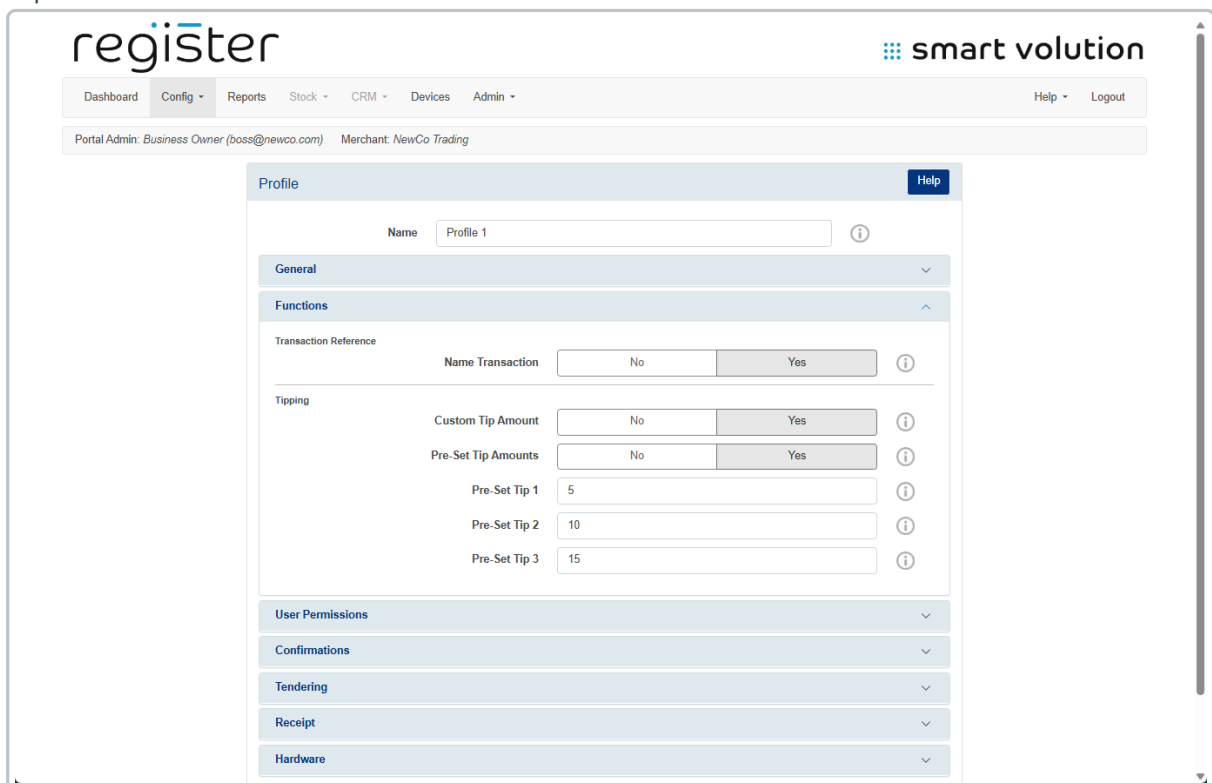


4. Find the Profile assigned to your device and click the **Edit** () icon.

- You can confirm which profile your device uses under the **Devices** tab.



5. Expand the Functions section.



Configure Your Preferences:

- **Disable custom tip entry**
Set **Custom Tip Amount** to **No** to prevent users from entering a bespoke tip value.
- **Disable pre-set tip buttons**
Set **Pre-Set Tip Amount** to **No** to remove the three fixed-percentage tip options.
- **Adjust preset tip percentages**
Use the **Pre-Set Tip 1–3** fields to input your desired percentage values (e.g., 5, 10, 15).

- **Disable tipping altogether**

Set both **Custom Tip Amount** and **Pre-Set Tip Amount** to **No**.

6. Click the **Save** button at the bottom of the screen.

🔗 To Apply the Changes on Your Device:

7. On the **login** screen of your device, tap the **Update Data** button (top right) to sync the latest settings.

