

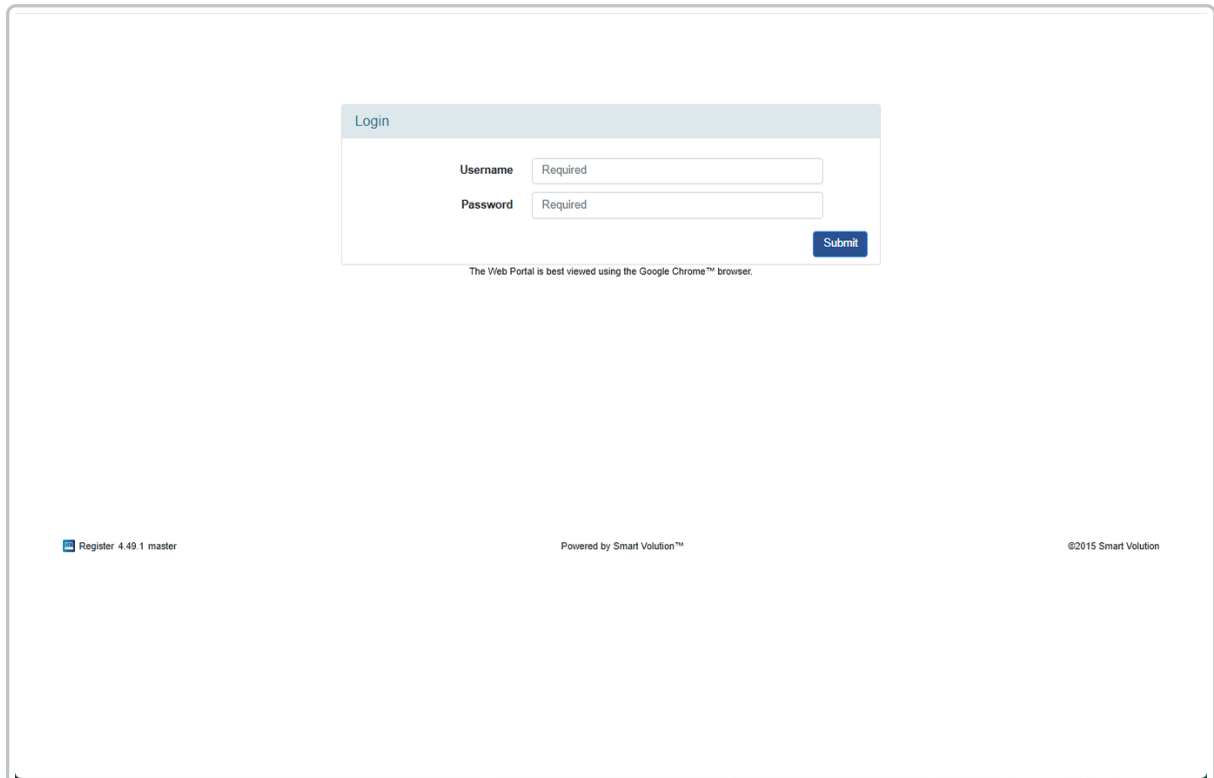
# ? How to disable "Allow Staff to Stay Logged In"

Last Modified on 04/07/2025 4:52 pm BST

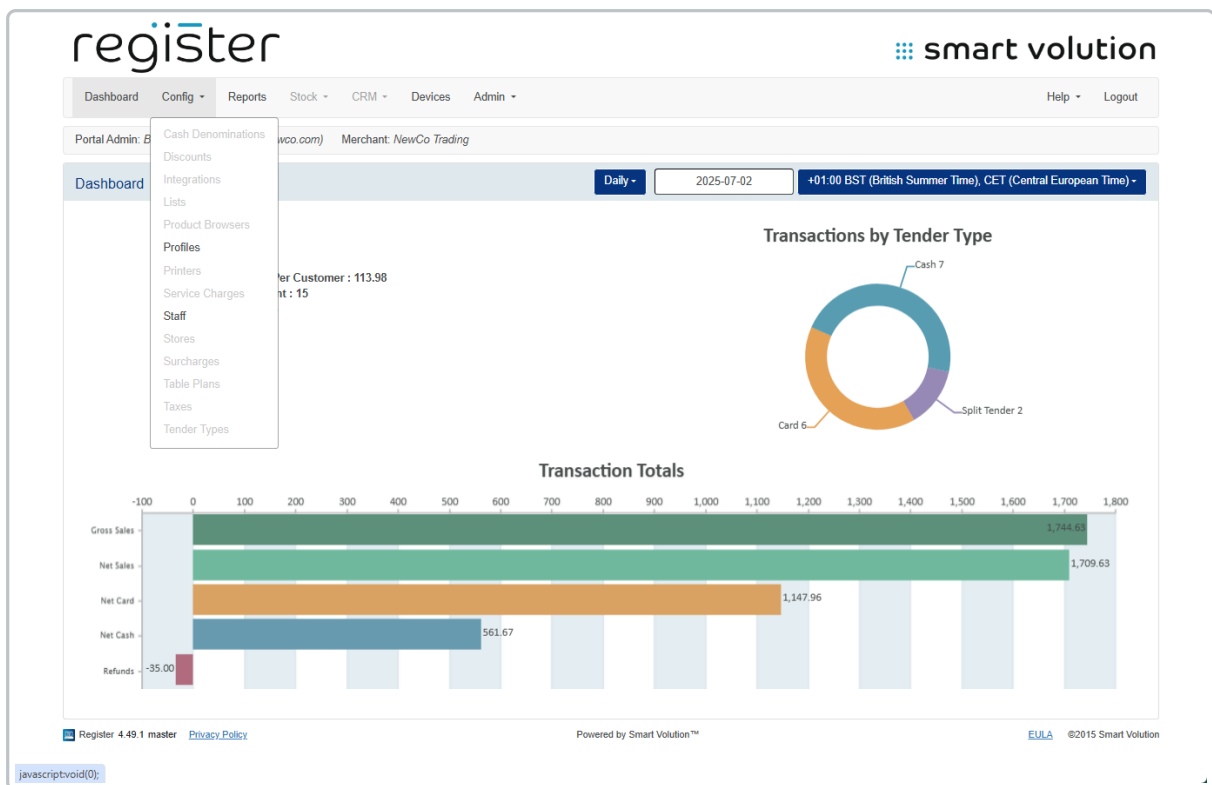
By default, staff members can toggle “**Keep me logged in**” on the login screen to stay signed in beyond the auto logout timeout. To remove this option and ensure automatic logout after inactivity:

? On the Web Portal:

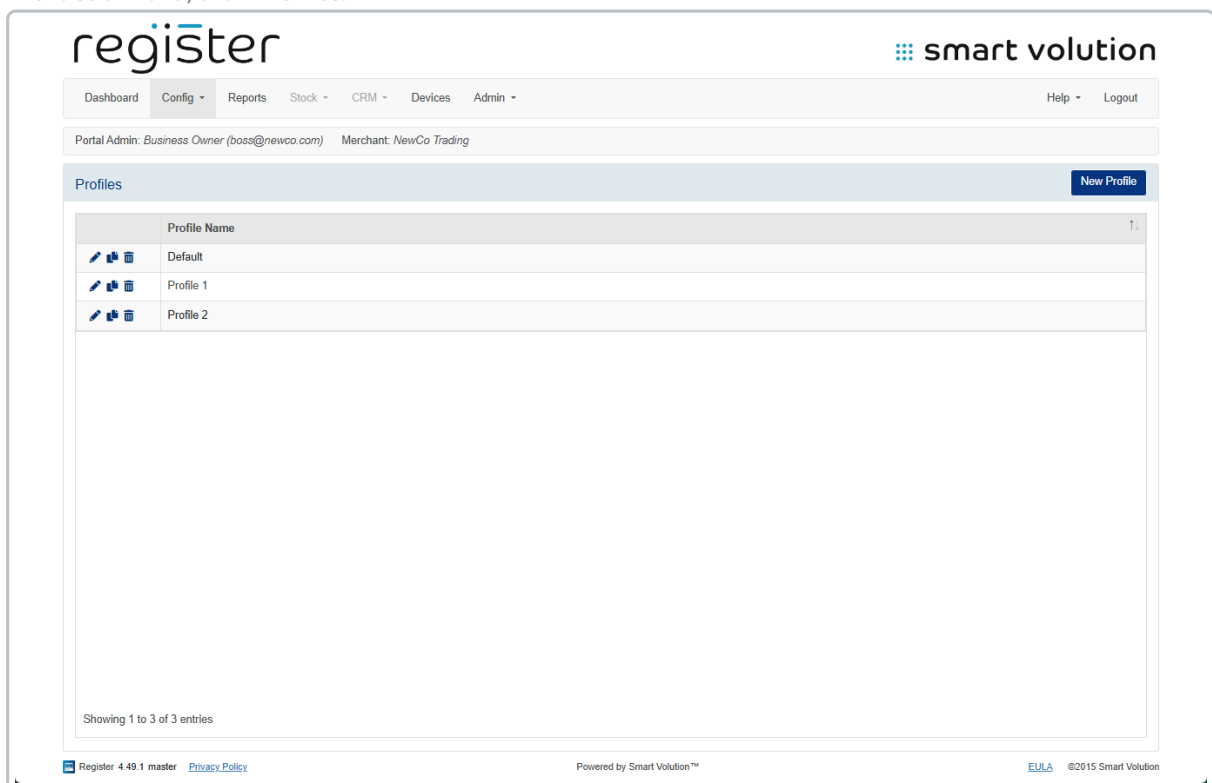
1. **Log in** to the **Web Portal** using credentials provided by your **Solution Provider**.

A screenshot of a web portal login interface. At the top, there is a light blue header with the word "Login" in a small, dark font. Below the header, there are two input fields: "Username" and "Password". Each field has a "Required" label to its right. To the right of the "Password" field is a blue "Submit" button. Below the input fields, there is a small line of text: "The Web Portal is best viewed using the Google Chrome™ browser." At the bottom of the page, there are three pieces of text: "Register 4.49.1 master" on the left, "Powered by Smart Volution™" in the center, and "©2015 Smart Volution" on the right.

2. Click **Config** in the top menu bar.

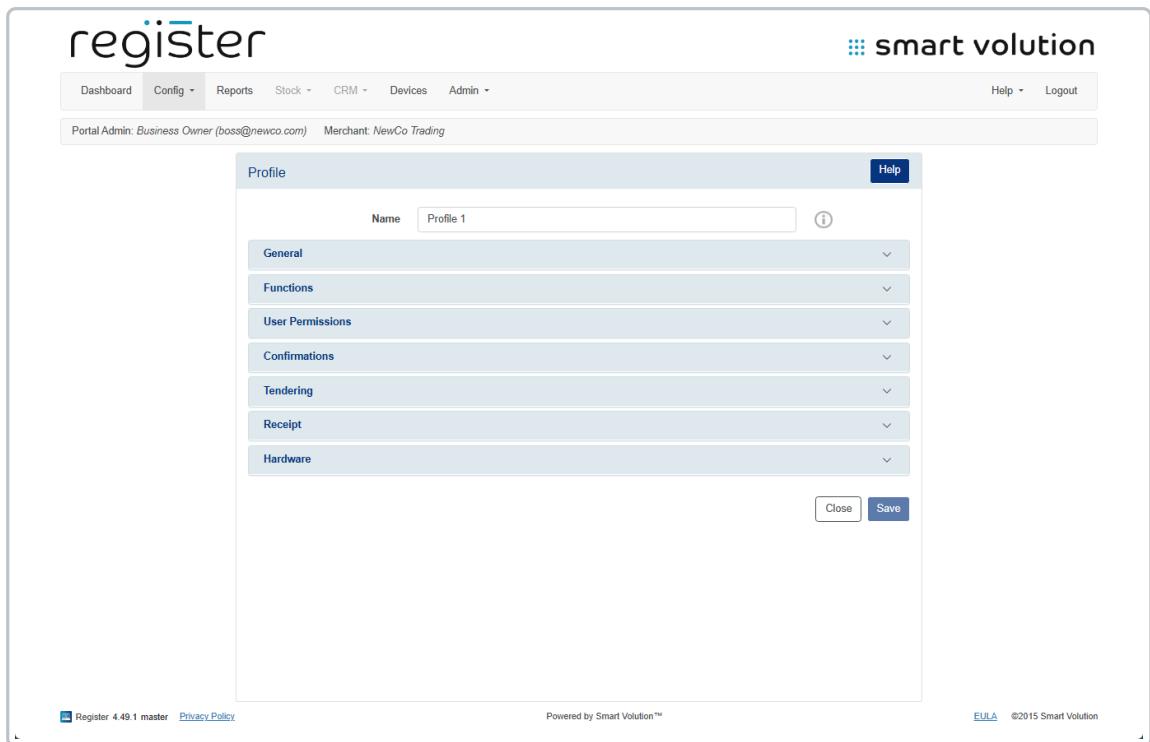


3. In the sub-menu, click **Profiles**.

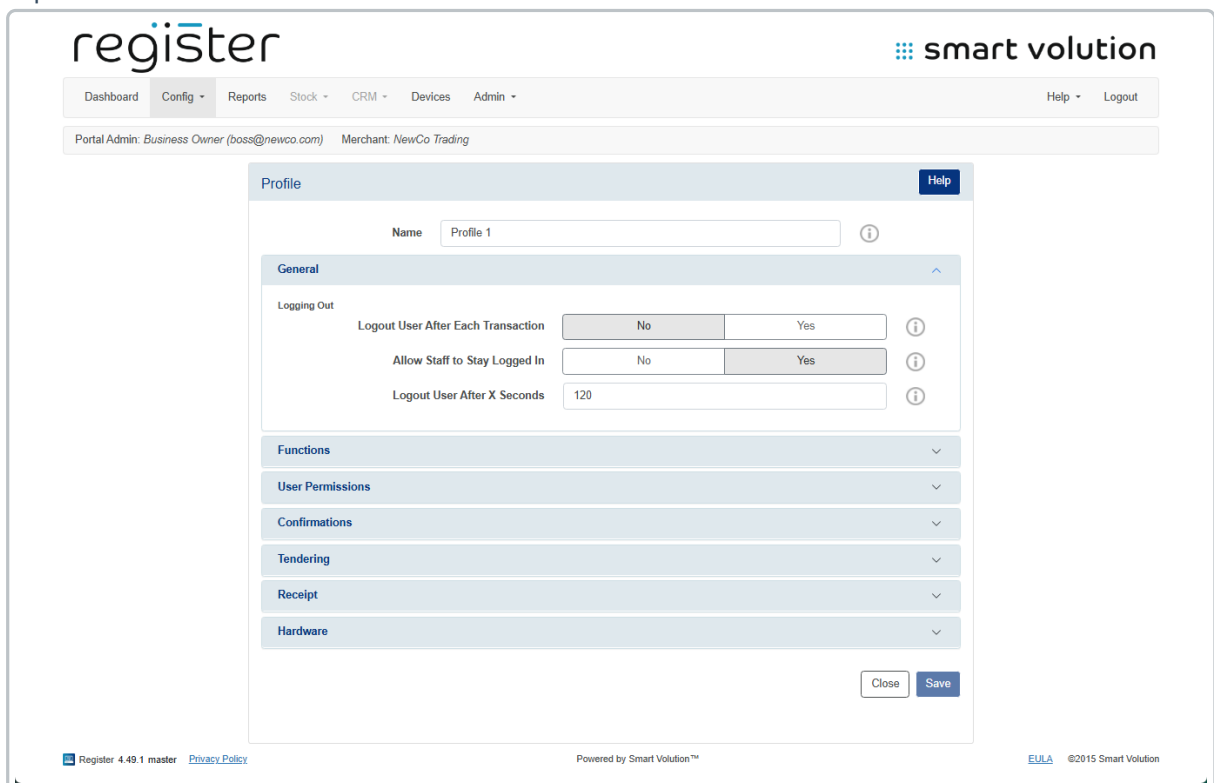


4. Locate the Profile assigned to your device and click the **Edit** (✎) icon.

- Not sure which profile? Check under the **Devices** tab.



5. Expand the **General** section.



6. Set **Allow Staff to Stay Logged In** to **No**.

7. Click the **Save** button at the bottom of the screen.

**On Your Device:**

8. From the **login screen**, tap the **Update Data** button (top-right corner) to apply the updated configuration.

